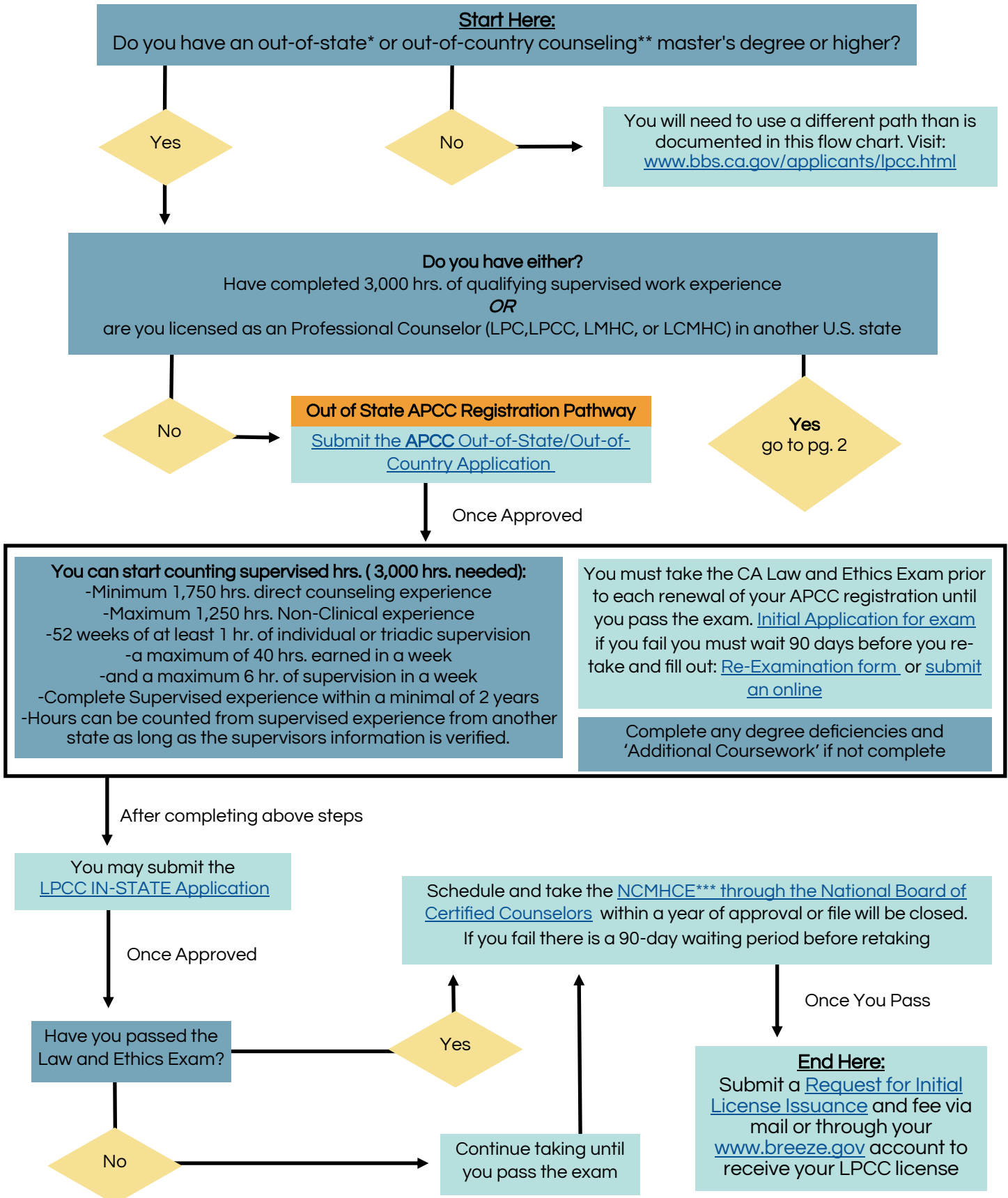


California LPCC Out-of-State/ Out-of-Country Application Process



An out-of-state or out-of-country counseling master's degree or higher
 +
 And you have either:
 Completed 3,000 hrs. of qualifying supervised work experience *OR*
 are you licensed as an Professional Counselor in another U.S. state that is at
 the highest level

Yes
 cont. from
 pg. 1

Do you meet ALL of the following requirements?

- I have held a license as a Professional Clinical Counselor in another United States jurisdiction for at least **2 yrs.**
- The license I hold is current, and has been active and unrestricted for at least **2 yrs.** immediately before the date I submit my application to the Board.
- The license I hold is at the highest level for independent clinical practice in that jurisdiction.
- The degree that qualified me for this license is a master's or doctoral degree obtained from a school holding a regional or national institutional accreditation recognized by the U.S. Department of Education (USDE), or a school approved by the California Bureau for Private Postsecondary Education (BPPE).

No

Yes

Licensure via Education & Experience Pathway

Submit the [LPCC Out-of-State Application \(Path B\)](#)

Additional steps to this path that are not in Path A include:

- Submitting specifics on your degree
- Up to 108 hours of 'Additional Coursework'
- Some will need to submitting supervision experience

If licensed in another state and deficit supervision hrs. or have degree deficiencies you can complete an [APCC Application](#) to make up supervision hours in CA and/or to continue working in the field while you complete course deficiencies.

Once Approved

Take the CA Law and Ethics Exam:

[Initial Application for exam](#)

if you fail you must wait 90 days before you retake and fill out:

[Re-Examination form](#) or [submit an online](#)

Once Passed, contact the Board of Behavioral Sciences (BBS)

If you have passed the ***NCMHCE exam before, send verification in a sealed envelope to the BBS from the [National Board of Certified Counselors](#)

If you have not, schedule and take the [NCMHCE](#)
 There is a 90-day waiting period before retaking

Licensure by Credential Pathway

Submit the [LPCC Out-of-State Application \(Path A\)](#)

Once Approved

Take the CA Law and Ethics Exam:

[Initial Application for exam](#)

if you fail you must wait 90 days before you retake and fill out: [Re-Examination form](#) or [submit an online request](#)

Once Passed

End Here:

Submit a [Request for Initial License Issuance](#) and fee to receive your LPCC license

*Out-of-State= a degree from a school located outside of CA or an online program that is not designed to meet CA's requirements.
 **Out-of-Country = a degree earned from a school located outside of the US or its territories
 ***NCMHCE= National Clinical Mental Health Counseling Exam